



SPINE SURGERY

# AESCULAP<sup>®</sup> CeSPACE<sup>®</sup> TITANIUM

## ANTERIOR CERVICAL INTERBODY FUSION SYSTEM

SURGICAL TECHNIQUE

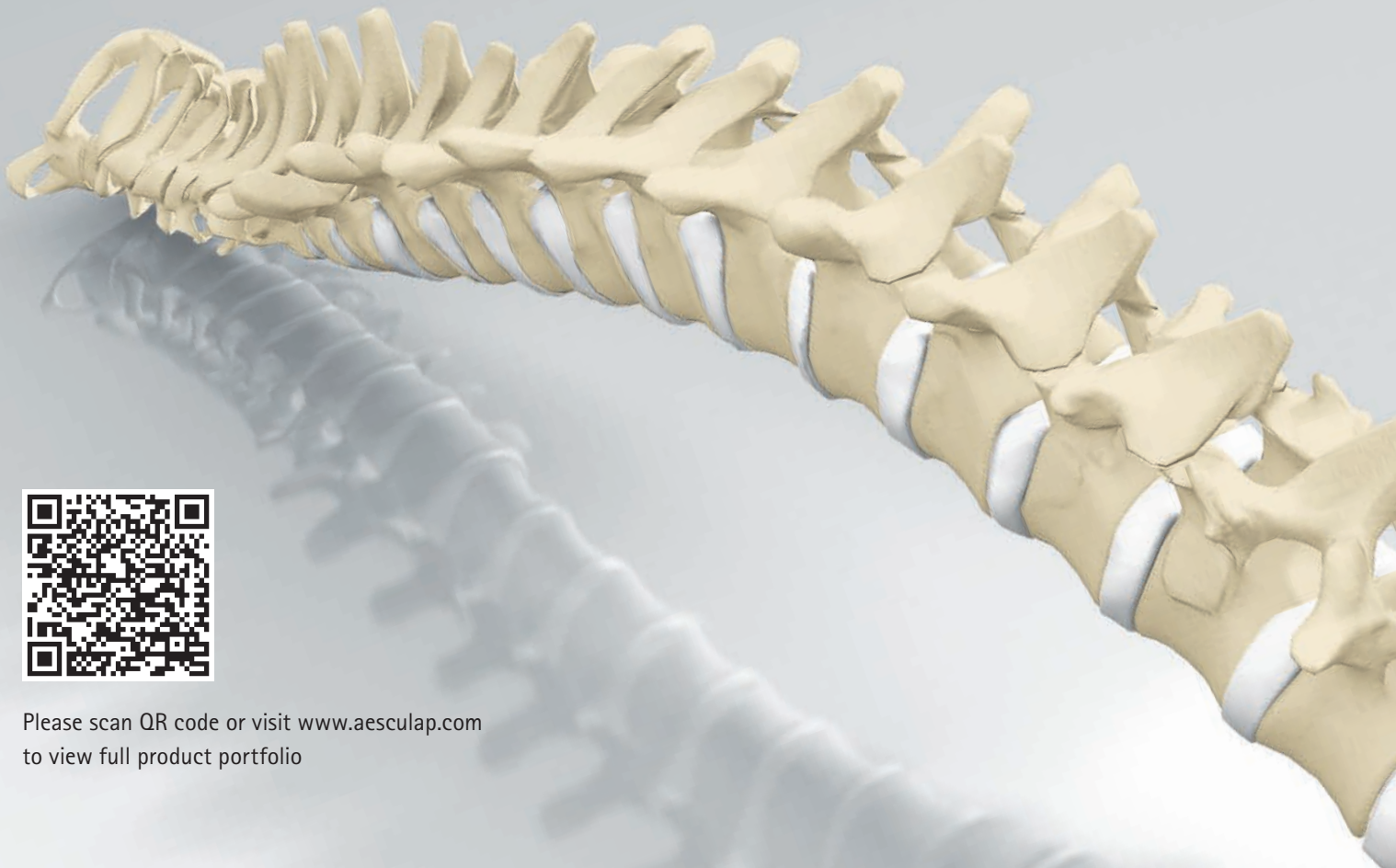
# AESCULAP® CERVICAL SPINE

## PROTECTING AND PRESERVING SPINAL STABILITY

Modern lifestyle has resulted in increasing physical inactivity among people all over the world. Of the many medical problems associated with this, spinal disorders are among the most critical. This is even more significant as the spinal column is one of the most important structures in the human body. It supports and stabilizes the upper body and is the center of our musculoskeletal system, which gives the body movement.

Our work in the field of spine surgery is dedicated to protecting the spinal column and preserving its stability. We support spine surgeons with durable, reliable products and partner services for proven procedures and good clinical outcomes (1-10).

Our philosophy of sharing expertise with healthcare professionals and patients allows us to develop innovative implant and instrument systems that help to preserve stability and stabilize the cervical and thoracolumbar spine.



Please scan QR code or visit [www.aesculap.com](http://www.aesculap.com)  
to view full product portfolio

# AESCULAP<sup>®</sup> CeSPACE<sup>®</sup> TITANIUM

## CONTENT



---

### A GENERAL INFORMATION

---

### B SURGICAL TECHNIQUE

B.1. PATIENT POSITIONING

B.2. EXPOSURE OF THE INTERVERTEBRAL SPACE

B.3. DISTRACTION / DISCECTOMY / PREPARATION OF  
THE ENDPLATES

B.4. IMPLANT SELECTION

B.5. FILLING OF CAGE

B.6. CeSPACE<sup>®</sup> TITANIUM INSERTION

---

### C IMPLANT & INSTRUMENT OVERVIEW

# AESCULAP® CeSPACE® TITANIUM

A | GENERAL INFORMATION

## PHILOSOPHY

CeSPACE® TITANIUM is a spacer used for cervical interbody fusion.

It is indicated for stabilization of the cervical spine C2-T1 through anterior approach, monosegmental and multisegmental.

### ➤ CeSPACE® TITANIUM IS DESIGNED TO DELIVER

- PRIMARY STABILITY (11).
- RESTORATION OF THE NATURAL DISC HEIGHT (6).
- SEGMENTAL LORDOTIC CORRECTION (12).



# AESCULAP® CeSPACE® TITANIUM

## A | GENERAL INFORMATION

### IMPLANT MATERIAL



Fig. 1

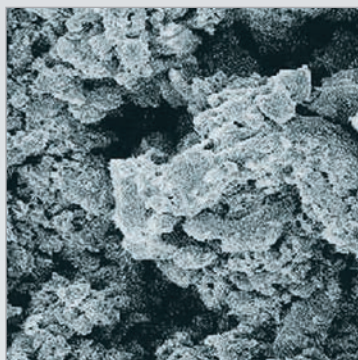


Fig. 2

➤ The heart of this implant is a solid titanium alloy core (Ti6Al4V acc. to ISO 5832-3). The core is mantled with the proven PLASMAPORE® coating to increase the contact area between implant and endplate (11–14).

PLASMAPORE® is a pure titanium coating (Ti/ISO 5832-2) which allows ingrowth of bone due to its balanced relationship between pore depth, porosity and roughness (11–13).

Using a special manufacturing procedure, the implant surface is sprayed with pure titanium powder. Molten titanium particles settle on the core of the implant where they cool rapidly, building a firm form-lock between coating and core (Fig. 1).

In this way, each layer of the coating is built up and a favorable surface for bone ingrowth is created (7, 14) (Fig. 2).

#### ➤ AIM OF THE PLASMAPORE® COATING

##### ■ Primary Stability

The increased surface roughness of the PLASMAPORE® coating contributes to the primary stability of the motion segment (11).

##### ■ Secondary Stability

Bone growth into the coating is enabled due to the supportive features of PLASMAPORE®, which leads to bone fusion between the adjacent vertebrae with the implant (7, 14).

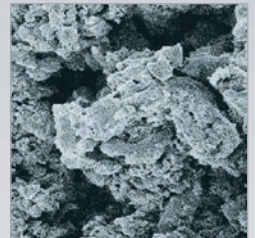
The coating concept, which has been proven as a result of many years of use in the field of hip prosthetics, is widely used in spinal surgery (11–13).

# IMPLANT FEATURES



## ➤ PLASMAPORE® COATING

- High primary stability due to roughened surface which increases migration resistance and mechanical strength (11).
- High secondary stability due to bone ongrowth and ingrowth into the PLASMAPORE® structure (7, 14).



## ➤ IMPLANT DESIGN

- Fixation crown for a firm implant fit and high primary stability (11, 15).
- Favorable ration between contact area and opening (11, 15).
- Option of filling with bone or bone substitute to enhance bone bridging.



## ➤ IMPLANT VARIETY

- Adequate range of sizes to enable the choice of implant size to fit the patient.



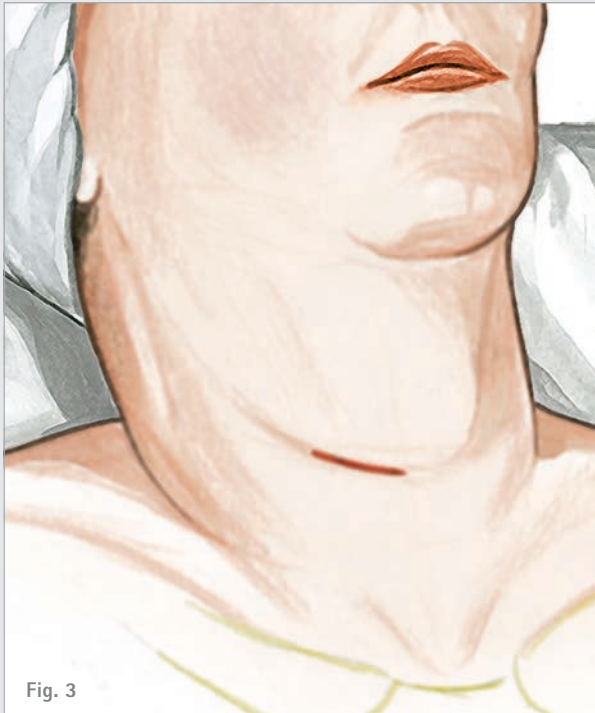
## ➤ INSTRUMENT DESIGN

- Specifically designed and clearly arranged instruments.



# AESCULAP® CeSPACE® TITANIUM

## B | SURGICAL TECHNIQUE

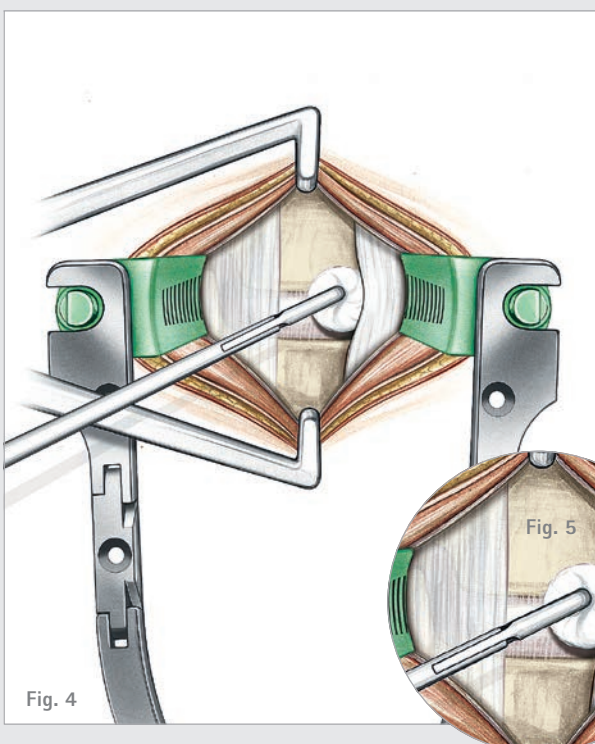


### B.1. PATIENT POSITIONING

- The patient is placed in the supine position with the head slightly reclined (Fig. 3) and stabilized in a head holder. Once the lordotic cervical spine has been supported, the thorax may be placed on a pillow to emphasize the reclinatio of the cervical spine. The arms are fixed alongside the body.

### B.2. EXPOSURE OF THE INTERVERTEBRAL SPACE

- After the skin incision and preparation, the CCR retractor is placed. The blades are available in PEEK and TITANIUM. A counter retractor can be used (Fig. 4/5). The subcutaneous tissue is separated from the platysma cranially, caudally and medially, and the platysma is also separated following the direction of its fibres. The margins of the platysma can be held apart with the retractor or with two surgical forceps.
- Now the medial edge of the sternocleidomastoid muscle is located and prepared with the index finger in the connective tissue space over the ventral surface of the cervical spine and under lateralization of the vascular nerve bundle and medial-ization of the trachea, esophagus and thyroid gland.
- After the Langenbeck hooks have been inserted, the ventral surface of the cervical spine, still covered by a thin prevertebral layer of connective tissue, is revealed. This layer can now be exposed by either a blunt scissor or alternatively through bipolar coagulation, in order to expand the tissue cranially and caudally using a swab. A wire is set under X-ray monitoring to mark the intervertebral disc space.





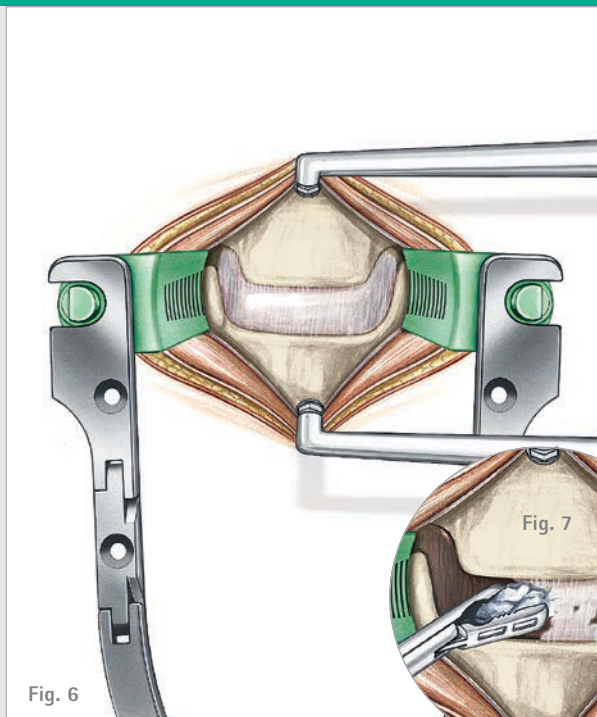


Fig. 6

### B.3. DISTRACTION / DISCECTOMY / PREPARATION OF THE ENDPLATES

- The distraction screws are placed in position and the CASPAR® distractor is applied following the CASPAR® technique (Fig. 6).
- Complete discectomy is performed using various rongeurs, rectangular curettes and bone curettes (Fig. 7). While using a high speed drill to remove the posterior rim and/or dorsal osteophytes, care must be taken to avoid damaging the vertebral body endplates.

#### PLEASE NOTE

- Make certain that the endplates of the neighboring vertebral bodies are not weakened, in order to minimize the risk of migration.
- Make certain that the implant bed is properly prepared to avoid damage to the implant when it is driven in.

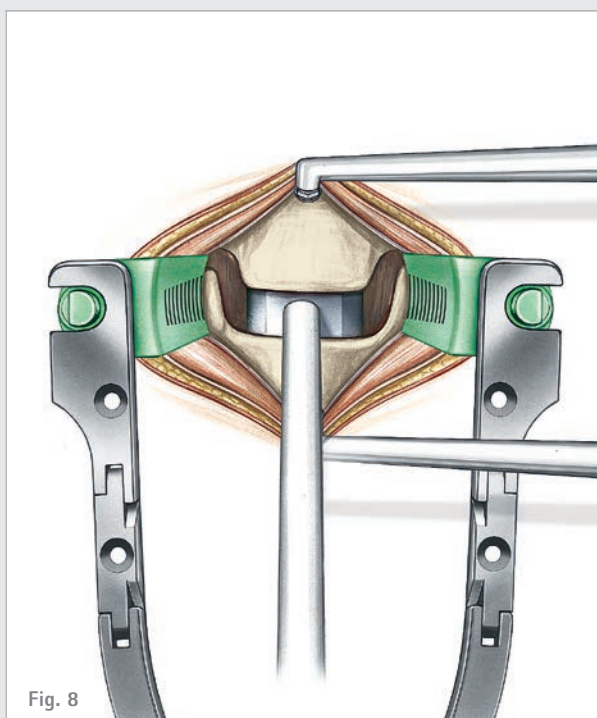


Fig. 8

### B.4. IMPLANT SELECTION

- The correct implant size can be established using the trial implants (Fig. 8).
- Specific trials respecting the implant geometry are available for the CeSPACE® TITANIUM implants. Laser markings on the handle as well as on the trial itself indicate the cranial and caudal side of the trial.

#### DETERMINATION OF IMPLANT SIZE OF CeSPACE® TITANIUM

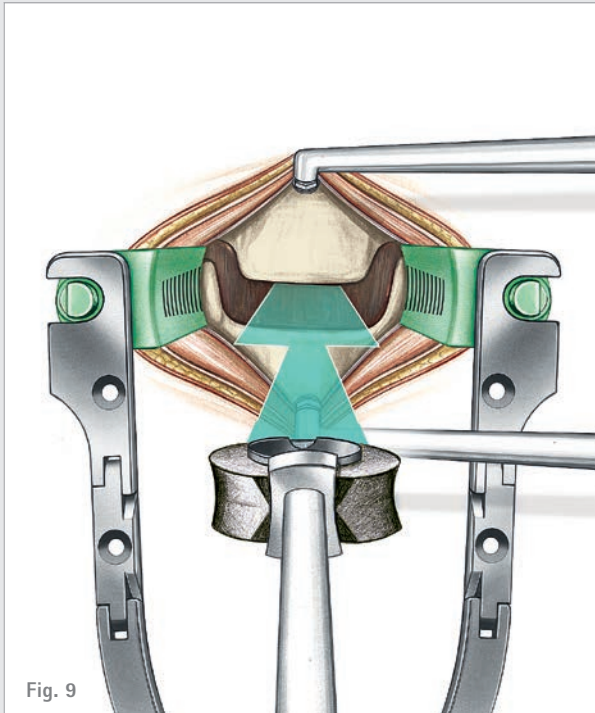
- The height of the CeSPACE® TITANIUM trials is inclusive of the fixation crown.

#### PLEASE NOTE

The trials are essential to ensure the correct implant size to be used.

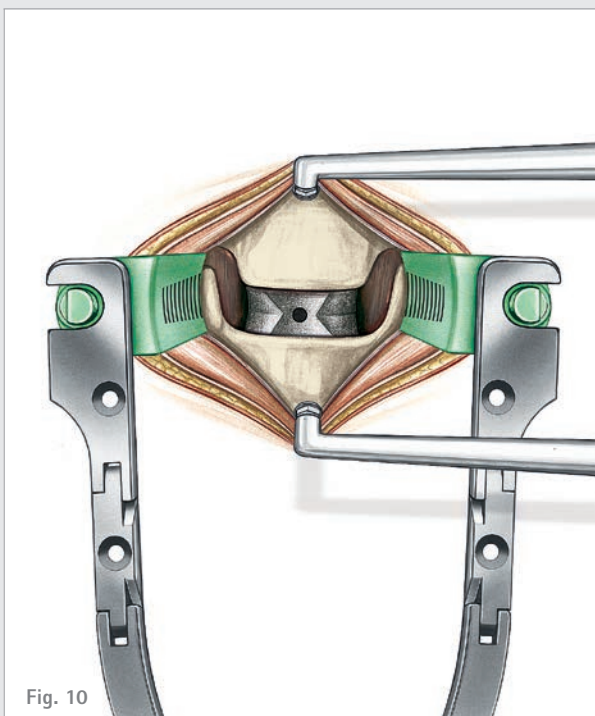
# AESCULAP® CeSPACE® TITANIUM

## B | SURGICAL TECHNIQUE



### B.5. FILLING OF CAGE

- The CeSPACE® TITANIUM implant is to be removed from packaging with the inserter.
- Optionally, the cage can be filled with bone or bone substitute.

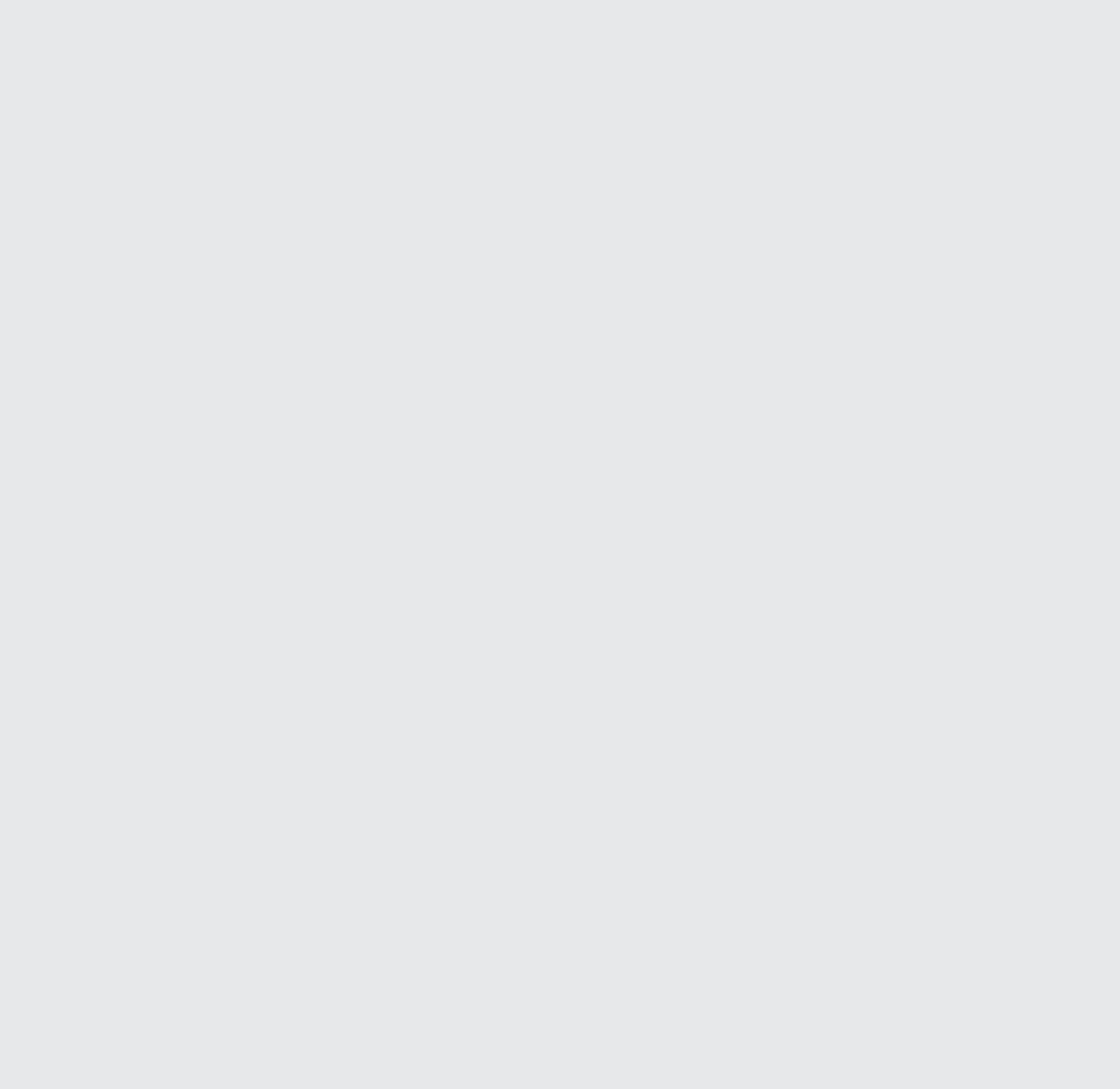


### B.6. CeSPACE® TITANIUM INSERTION

- The titanium implant is held securely and firmly onto the CeSPACE® TITANIUM inserter by means of a screw joint. The flexible sheath on the inserter has a stop at the front end which prevents the implant from being inserted too deeply into the intervertebral disc compartment.
- Once CeSPACE® TITANIUM is attached to the inserter, it can be introduced into the intervertebral space using image converter monitoring (Fig. 9).
- The implant should be inserted centrally in AP and with a distance of approximately 1-2 mm to both the anterior and posterior rim (Fig. 10).
- For additional stabilization, a cervical plate may be necessary.

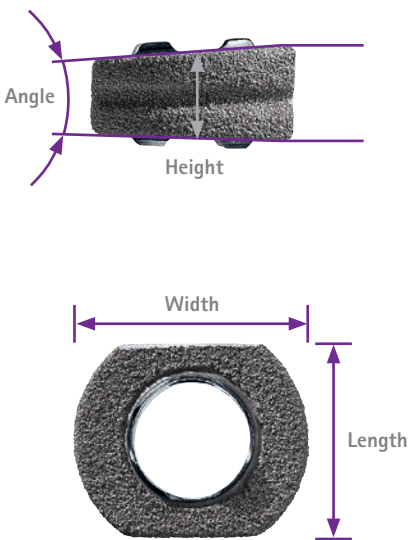
#### PLEASE NOTE

Use CeSPACE® TITANIUM inserter with depth stop sleeve.



# AESCULAP® CeSPACE® TITANIUM

## C | IMPLANT & INSTRUMENT OVERVIEW

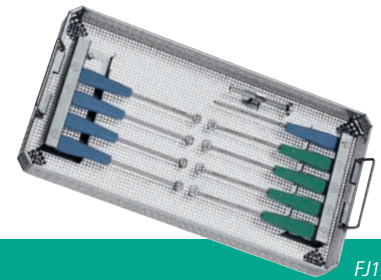
CeSPACE® TITANIUM IMPLANTS, 5°	Article No.	Size (Length x Width x Height)
	FJ134T	11.5 x 14 x 4 mm
	FJ135T	11.5 x 14 x 5 mm
	FJ136T	11.5 x 14 x 6 mm
	FJ137T	11.5 x 14 x 7 mm
	FJ144T	13.5 x 16 x 4 mm
	FJ145T	13.5 x 16 x 5 mm
	FJ146T	13.5 x 16 x 6 mm
	FJ147T	13.5 x 16 x 7 mm

### Implant materials

ISOTAN®<sub>F</sub> Titanium forged alloy (Ti6Al4V/ISO 5832-3)

PLASMAPORE® Pure titanium (Ti/ISO 5832-2)

## FJ170 – CeSPACE® TITANIUM Instrumentation



FJ170  
CeSPACE® TITANIUM Instrumentation

INSTRUMENTS	Article No.	Description	Quantity
	FJ164R	CeSPACE® TITANIUM trial implant, 5°, 14 x 4 mm, blue	1
	FJ165R	CeSPACE® TITANIUM trial implant, 5°, 14 x 5 mm, blue	1
	FJ166R	CeSPACE® TITANIUM trial implant, 5°, 14 x 6 mm, blue	1
	FJ167R	CeSPACE® TITANIUM trial implant, 5°, 14 x 7 mm, blue	1
	FJ174R	CeSPACE® TITANIUM trial implant, 5°, 16 x 4 mm, green	1
	FJ175R	CeSPACE® TITANIUM trial implant, 5°, 16 x 5 mm, green	1
	FJ176R	CeSPACE® TITANIUM trial implant, 5°, 16 x 6 mm, green	1
	FJ177R	CeSPACE® TITANIUM trial implant, 5°, 16 x 7 mm, green	1
	FJ100R	Inserter	1
	FJ171R	Storage Tray	1

# AESCULAP® CeSPACE® TITANIUM

## REFERENCE

- (1) Suchomel P, Jurák L, Antinheimo J, Pohjola J, Stulik J, Meisel H-J et al. Does sagittal position of the CTDR-related centre of rotation influence functional outcome? Prospective 2-year follow-up analysis. *Eur Spine J.* 2014;23(5):1124–34.
- (2) Meisel H-J, Jurák L, Antinheimo J, Arregui R, Bruchmann B, Čabraja M et al. Four-year results of a prospective single-arm study on 200 semi-constrained total cervical disc prostheses: clinical and radiographic outcome. *J Neurosurg Spine.* 2016;25(5):556–65.
- (3) Boselie TFM, van Santbrink H, Bie RA de, van Mameren H. Pilot Study of Sequence of Segmental Contributions in the Lower Cervical Spine During Active Extension and Flexion. *SPINE.* 2017;42(11):E642–E647.
- (4) Epstein NE. Anterior cervical dynamic ABC plating with single level corpectomy and fusion in forty-two patients. *Spinal Cord.* 2003;41(3):153–8.
- (5) Stulik J, Pitzen TR, Chrobok J, Ruffing S, Drumm J, Sova L et al. Fusion and failure following anterior cervical plating with dynamic or rigid plates: 6-months results of a multi-centric, prospective, randomized, controlled study. *Eur Spine J.* 2007;16(10):1689–94.
- (6) Kraysenbühl N, Schneider C, Landolt H, Fandino J. Use of an empty, PLASMAPORE®-covered titanium cage for interbody fusion after anterior cervical microdiscectomy. *J Clin Neurosci.* 2008;15(1):11–7.
- (7) Takeuchi M, Yasuda M, Niwa A, Wakao N, Nakura T, Osuka K et al. PLASMAPORE®-coated titanium cervical cages induce more rapid and complete bone fusion after anterior cervical discectomy and fusion as compared to noncoated titanium cages. *World Neurosurg.* 2014;82(3-4):519–22.
- (8) Stulik J, Vyskocil T, Sebesta P, Kryl J. Atlantoaxial fixation using the polyaxial screw-rod system. *Eur Spine J.* 2007;16(4):479–84.
- (9) Tippetts RH, Apfelbaum RI. Anterior cervical fusion with the Caspar instrumentation system. *Neurosurgery.* 1988;22 (6 Pt 1):1008–13.
- (10) Stulik J, Nesnidal P, Kryl J, Vyskocil T, Barna M. Kyphotic deformities of the cervical spine. 28th Annual Meeting of the AANS/CNS Section on Disorders of the cervical Spine and peripheral Nerves. March 2012 Orlando, Florida.
- (11) Arregui R, Aso J, Martínez-Quiñones JV, Consolini F, Lambán N, Dominguez M. Cespace: sistema de fusión intersomática cervical. Estudio preliminar en 104 casos (120 implantes) [Cespace. cervical interbody fusion system. Preliminary retrospective study in 104 cases (120 implants)]. *Neurocirugía* 2011; 22(6):542–53.
- (12) Cabraja M, Oezdemir S, Koeppen D, Kroppenstedt S. Anterior cervical discectomy and fusion: Comparison of titanium and polyetheretherketone cages. *BMC Musculoskelet Disord* 2012; 13(1):1-9.
- (13) Swamy G, Pace A, Quah C, Howard P. The Bicontact cementless primary total hip arthroplasty: long-term results. *Int Orthop.* 2012;36(5):915–20.
- (14) Fink U. PLASMAPORE®: A plasma-sprayed microporous titanium coating to improve the long-term stability 1996; *Acualités en. Biomatériaux.* (III:97-104).
- (15) Meier U, Kemmesies D. Experiences with six different intervertebral disc spacers for spondylodesis of the cervical spine. *Orthopade* 2004;33(11):1290–9.



# AESFULAP<sup>®</sup> – a B. Braun brand

Aesculap AG | Am Aesculap-Platz | 78532 Tuttlingen | Germany  
Phone +49 7461 95-0 | Fax +49 7461 95-2600 | [www.aesculap.com](http://www.aesculap.com)

The main product trademark "AESFULAP" and the product trademarks "CASPAR", "CeSPACE", "ISOTAN" and "PLASMAPORE" are registered trademarks of Aesculap AG.

Subject to technical changes. All rights reserved. This brochure may only be used for the exclusive purpose of obtaining information about our products. Reproduction in any form partial or otherwise is not permitted.